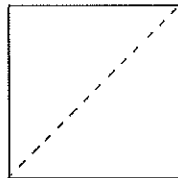


# SCRAPPY UNDER CONTROL

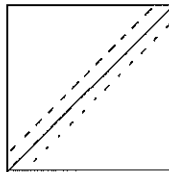
## MYSTERY QUILT PART #7

Fabrics needed are your 5" light/background squares, 5" dark/scrappy squares and the 4 patch units created in Clue #1, and all the blocks you have thus far.

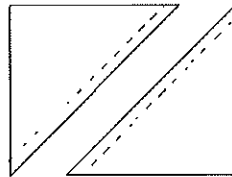
1. Draw a diagonal on the wrong side of each of the 40 light 5" squares. Again, the angler can come in handy here.



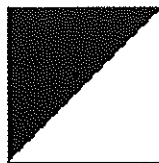
2. With right sides together place a light square on top of a dark 5" square and sew a  $\frac{1}{4}$ " either side of the diagonal.



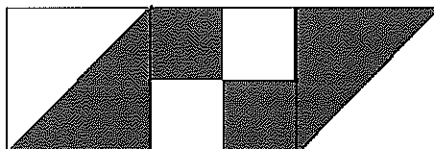
3. Cut along the diagonal and press open. Press the seam allowance towards the dark fabric.



4. Trim the bias squares so that they measure  $4\frac{1}{2}$ " square. Make 80 bias squares.

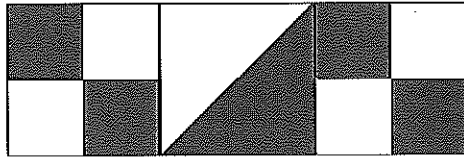


5. Sew a bias square to either side of 20 of the four patches constructed in Clue #2 paying attention to the location of the dark and light parts.. Construct 20 of these units which should measure  $12\frac{1}{2}$ " x  $4\frac{1}{2}$ ".

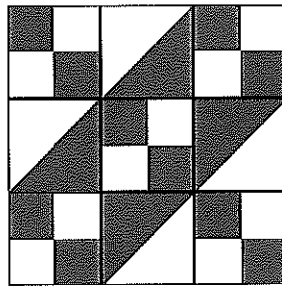


### Mystery Clue #7 (continued)

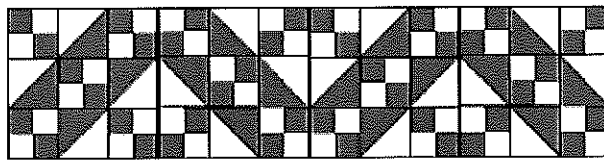
6. Sew a four patch constructed in Clue #2 to either side of the remaining bias squares. Pay close attention to the location of the dark and light parts. Construct 40 of these units which should measure  $12\frac{1}{2}$ " x  $4\frac{1}{2}$ ".



7. Join one of these units to either side of the units constructed in the previous step to form a Jacob's Ladder block. Construct 20 of these blocks which should measure  $12\frac{1}{2}$ " x  $12\frac{1}{2}$ ".



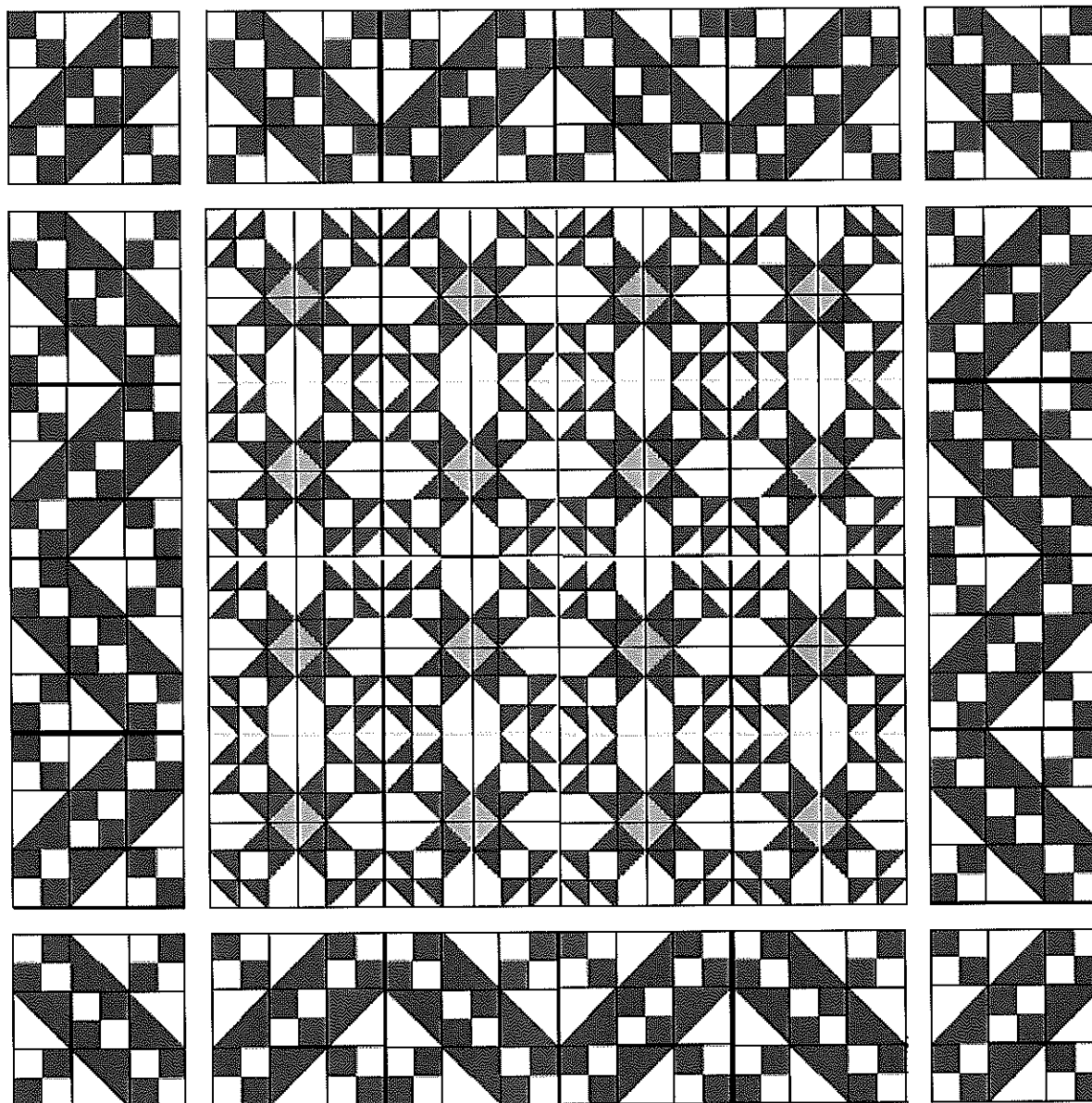
8. Join four Jacob's Ladder blocks together to make a strip which measures  $12\frac{1}{2}$ " x  $48\frac{1}{2}$ ". Construct four strips. Leave the remaining four as single blocks



9. Join the four  $24\frac{1}{2}$ " squares constructed in part 5 together to form a  $48\frac{1}{2}$ " square.
10. Join together the  $1\frac{1}{2}$ " strips for the narrow border to form the following lengths:-  $48\frac{1}{2}$ " (2),  $72\frac{1}{2}$ " (2) and  $12\frac{1}{2}$ " (4).
11. Sew a  $1\frac{1}{2}$ " x  $48\frac{1}{2}$ " strip of the narrow border to the left and right sides of the quilt top. Press seam allowance towards the border.
12. Sew a  $12\frac{1}{2}$ " x  $48\frac{1}{2}$ " strip of Jacob's Ladder blocks to the left and right sides of the quilt top. Press seam allowance towards narrow border.
13. Sew a  $1\frac{1}{2}$ " x  $72\frac{1}{2}$ " strip of the narrow border to the top and bottom of the quilt.
14. Sew the  $12\frac{1}{2}$ " strips of the narrow border to either end of the remaining  $12\frac{1}{2}$ " x  $48\frac{1}{2}$ " strips of Jacob's Ladder blocks.
15. Sew a single Jacob's Ladder block to either end of the strip making sure that the block is oriented correctly so that the design is continued.
16. Sew strip of six Jacob's Ladder blocks to top and bottom of quilt.

Mystery Clue #7 (continued)

17. The finished design.



The design and the instructions for making it are Copyright© 1996-97, 2001 to **Anne Bartlett**. An original design for the *Tasmanian Quilters Guild Newsletter* 1996-97.  
Modified by Barbara Sindlinger to have all the cutting instructions as Clue number #1.